

Corona II LED Line Lighting System

D Top light and dark field illumination



CORONA II LED lighting modules feature powerful brightness up to 3.500.000 lux and deliver outstanding homogeneity via a patented reflector design that perfectly shapes light, eliminating chromatic aberrations for unprecedented performance and better inspection results.

Features

Top Light/Dark Field Illumination

- ▶ Brightness up to 3.500.000 lux
- ▶ Patented reflector focusing technology
 - No color aberration
 - Higher efficiency
- ▶ Various LED colors
 - Standard: White, red, green, blue
 - IR (850 nm or 940 nm)
 - UV (395 nm - on request)
 - D50 (standard daylight)
- ▶ Eight lengths up to 1360 mm per single module
- ▶ Three passive cooling options
- ▶ Fan or water cooling available
- ▶ Stackable modules
- ▶ Various screens
 - Different diffuse screens
 - Polarizing screen
- ▶ High quality LED binning
- ▶ Advanced thermal management and temperature control
- ▶ Housing design for easy mounting and integration

LED controller

- ▶ External LED controller for flexibility and improved thermal management
- ▶ Four channels up to 1.8 amps per channel
- ▶ RS232, USB, Ethernet and RS485 from PC to the controller
- ▶ Analog or PWM input for external control
- ▶ Temperature stabilization
 - +/- 1 Kelvin water cooling option
 - +/- 2 Kelvin fan based cooling
- ▶ Automatic detection of Corona II modules with automatic current limitation
- ▶ Temperature monitoring in the controller and the Corona II modules

Customized solutions

Besides standard components Chromasens offers full custom solutions for lighting, camera and scanner solutions.

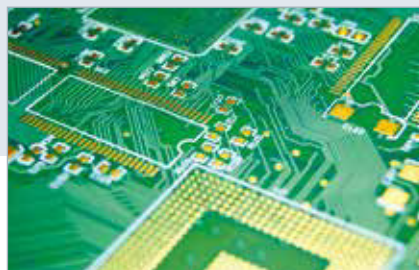
- Based on standard Corona II and XLC4 technology
- Special housing for the controller available
- Special filters or screenings for the LED module available
- Full custom designs

Applications

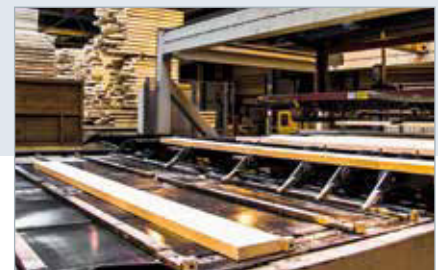
- Print inspection
- Surface inspection
- Document scanning
- Food inspection
- Steel inspection
- Semiconductor industry
- Measurement and quality control
- Web inspection
- General machine vision
- Sorting processes



Food



Electronics



Wood

Camera specifications:

THE CHROMASENS CORONA II FAMILY:

Three lighting concepts:



TOP LIGHT DARK FIELD



BRIGHT FIELD BACK LIGHTING



TUBE LIGHTING

CORONA II	
Illuminance (white)	Up to 3.500.000 lux @ 60 mm focus (type A) Min. 1.500.000 lux @ 95 mm focus (type B) Min. 800.000 lux @ 190 mm focus (type C) Min. 300.000 lux @ parallel focus (type D)
Available module length	170 mm to 1360 mm in steps of 170 mm
Focal length	60 mm; 95 mm, 190 mm; parallel
LED colors	White (5500 Kelvin or 3500 Kelvin); Red (632 nm); Green (520 nm); Blue (452 nm); IR (850 nm and 940 nm); UV (395 nm)
Ports	One LED channel per 170 mm segment I ² C port for temperature control and identification
Cable length	Standard length 2.5 m or 5 m Up to 15 m or drag chain cable on request
Protection class	IP 54
Operating temperature	0°C to + 70°C (housing temperature)
Certifications	CE, FCC compliant, RoHS
CONTROLLER XLC4	
Input voltage	24 Volt DC +/- 10 %; approx. 3.5 amps per used channel for full operation
Output	4 current controlled outputs, from 0.2 amps to 1.8 amps Output power 80 watt per channel and max. output voltage up to 47 volts
Controlling	RS232; RS485, USB, Ethernet Analog input 1-10 Volt and PWM interface
Protection class	IP 40
Operating temperature	0°C to + 50°C (housing temperature)
Certifications	CE, FCC compliant, RoHS