

Canon® EF/EF-S Lens Controller

(Product ID: Controller: LC-2, Adapters: LC-2A-C, LC-2A-M42)

The Canon® EF/EF-S Lens Controller is small and compact and can operate most Canon® and Tamron® EF/EF-S auto focus (AF) lenses. The Ethernet connection makes communication much simpler than traditional serial lens controllers and also allows it to be operated over a longer distances.



Compatibility	Remotely control Canon® and Tamron® EF/EF-S auto focus (AF) lenses	Adapters for c- and M42x1-mount cameras.
Control	Auto-detection of attached lens and F-number	Accurate control of Focus, and aperture
Networking	Multiple devices can be connected and simultaneously controlled over a network	10/100 Mbps Ethernet
Versatility	Unlimited programmable preset capability to easily store and recall saved positions on the lens	Easy to use software interface or TCP/IP API commands



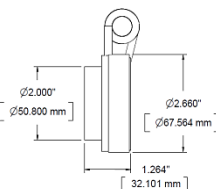
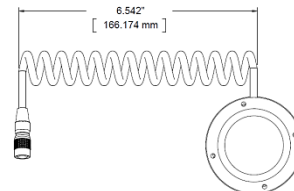
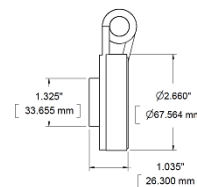
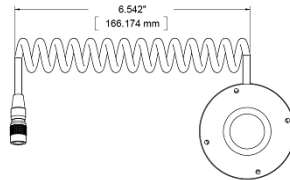
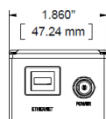
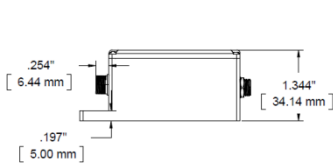
LC-2 (Control Box)



LC-2A-C (C-Mount Lens Adapter)



LC-2A-M42 (M42x1-Mount Lens Adapter)



SPECIFICATIONS

Power	100-240 V, 50-60Hz
Input	6V --- 1.5A
Operating Temperature	2-60 °C
Interface	10/100 Mbps Ethernet
Lens Adapter	M42, c, (customization available)
Lens inputs	1
Presets	Unlimited, programmable
Software	Windows GUI, TCP/IP API
ECCN	EAR99



Innovative Scientific Solutions, Inc.
7610 McEwen Road, Dayton, OH 45459
Phone (937) 630-3012 Fax (937) 630-3015

email: issj-sales@innssi.com
web: www.psp-tsp.com

Any and all underlying information and technology contained in this document may be subject to U.S. export controls, including the Export Administration Act (50 U.S.C. Appx. §§ 2401 et seq.) and the Export Administration Regulations ("EAR", 50 C.F.R. Parts 730-774), and may be subject to export or import regulations in other countries. You are responsible for complying with all trade regulations and laws both foreign and domestic. Except as authorized by law or distributor agreement with ISSI, you agree and warrant not to export or re-export the information to any country, or to any person, entity, or end-user subject to U.S. export controls, including without limitation persons or entities listed on the U.S. Department of Commerce Bureau of Export Administration's Denied Parties List and the U.S. Department of Treasury's Specially Designated Nationals. You further represent and warrant that no U.S. federal agency has suspended, revoked, or denied your export privileges. CANON® is a registered trademark of Canon, Inc.